

WOODRUN LODGE

#414

1 + den Bed - 2 Bath

Bedrooms:	1 + Den
Bath:	2
Location:	Blackcomb Mountain
Lift Access:	Ski in / Ski out
Village:	10 Min Walk
Max. Capacity:	4 - 5
Square Footage:	800 Sq Ft

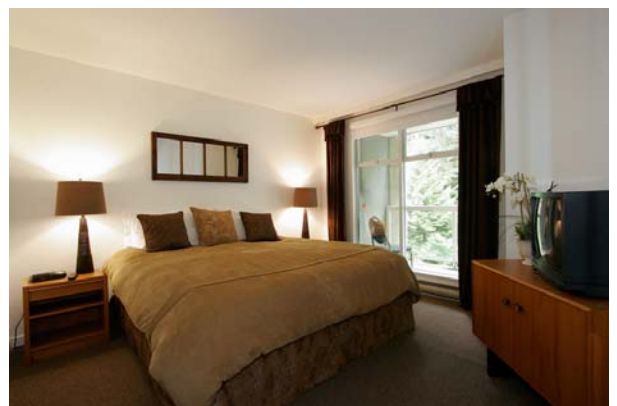
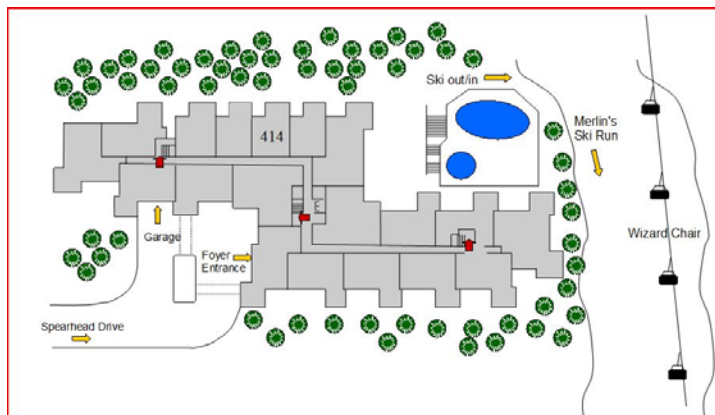
The Woodrun is one of the most desirable slopeside locations in Whistler. Nestled at the base of Blackcomb mountain, The Woodrun Lodge boasts ski in, ski out access with the Blackcomb gondola close by. After a hard day on the hill, relax in Whistler's largest hot tub or take a dip in the pool. With so much to do in Whistler our front desk concierge service will be happy to book a range of activities for you. Choose from catskiing, snowmobiling, dog sledding, or take a tour of the mountain by moonlight to name but a few. Whether you're here to ski or enjoy Whistler's après, here at The Woodrun we'll ensure you make the most of it! This apartment is comfortably furnished with 1 bedroom & Den and 2 full bathrooms. It is has everything you need, the location is phenomenal and literally a tennis ball's throw from the Blackcomb base and ski school. This is a superb vacation destination.

BEDDING CONFIGURATION

Master: King
Den: Bunk
Living Room: Sofabed.

WOODRUN FEATURES

- Spectacular slopeside location next to the Wizard Express Chair.
- Outdoor heated pool & Whistler's largest outdoor hot tub.
- Fully equipped kitchen, gas fireplace, private balcony, cable tv/vcr, radio.
- Private equipment lockers, secured underground parking & fitness centre.
- Wireless Internet
- Ski in/Ski out access.
- Modern furnishings
- Board games left by the owner for guest usage



WHISTLER DREAM
ACCOMMODATIONS