

NORTHERN LIGHTS#41

4 Bed - 4 Bath

Location: Village
Lift Access: ski in/out (10 Min Walk)
Village: 5 Min walk
Bedrooms: 4
Bath: 4
Max. Capacity: 8
Square Footage: 2200 sq ft

This beautiful 4 bedroom home has just had a complete designer renovation throughout. Now featuring brand new gourmet kitchen, luxury bathrooms and furnishings, this property is a favorite amongst our guests.

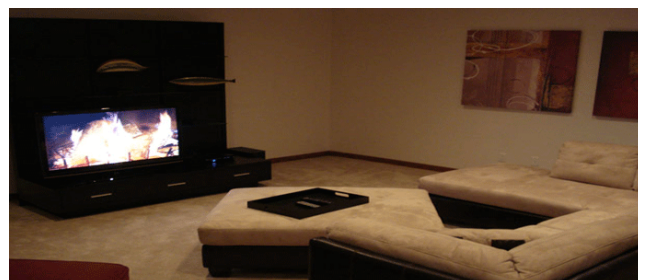
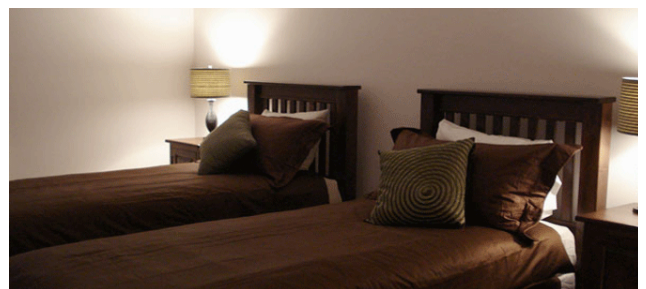
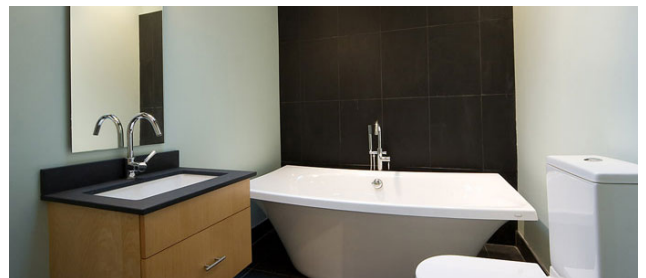
This spacious and bright 2200 sq. ft townhome is located just 100 meters from the slopes or a short 5 minute walk to the Village. The Living area has 25-foot vaulted ceilings and a fully equipped kitchen and barbecue on the deck. Relax in your own private hot tub while looking at views of the Village. This home suits families and large parties alike, but essentially those who really appreciate quality, warmth and privacy in the village.

BEDDING CONFIGURATION

Master: King
2nd Bedroom: King or split
3rd Bedroom: King or split
4th Bedroom: King or split

HOME FEATURES

- Wood burning fireplace
- Private hot tub
- Heated double garage
- Laundry
- Ski/board/golf/bike storage
- Mountain & valley views
- Luxury Bathrooms
- New renovated gourmet kitchen with stainless steel appliances
- 2nd lounge/media room
- Boot dryer
- BBQ
- Wireless Internet



WHISTLER DREAM
ACCOMMODATIONS